



The Nickelodeon Gift Shop

For a memorable souvenir of your trip or a unique gift to take home for someone you love, be sure to browse our carefully selected range of modern automatic musical items from around the world.

Together with the mechanical and optical amusements, souvenirs of Revelstoke and Canada, the wonderful Laurel Burch selection of bags and purses, imported from Texas, will amaze.

We also have original antique mechanical musical items for sale from time to time - please ask about our location service to help build your collection.

David, Lesley & Michael Evans

Proprietors

Share the wonder of the magical world of music from yesteryear!

Summer: Daily 10A - 6P

(usually - we break for tea, lunch, birthdays, private parties etc.)

Spring, Fall & Winter: Tue. - Sat. 11A - 4P

(usually - except for priority breaks, see above)

Also available for evening parties, weddings, special events etc.



for more information call

Revelstoke Nickelodeon Museum

111 First St. West, Box 3088 Revelstoke, BC V0E 2S0
(250) 837-5250 Em: mechmusic@aol.com

Printed in Canada for Free Distribution

Nickelodeon

Museum

Canada's Only
Mechanical Music
Museum

REVELSTOKE

British Columbia, Canada

A Journey Through Time and Music History



Debain Mechanical Piano formerly owned by the French Royal Family of Napoleon III and the Empress Eugenie.
Circa 1850

Portable Barrel Piano Circa 1840.
Used to earn money on the streets of London. Sherlock Holmes lives on!

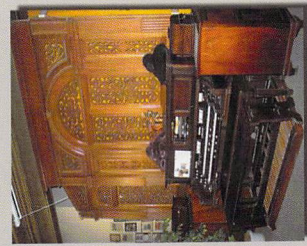
An exhibition standard musical box of huge proportions - nearly 4ft. along with matching chest of interchangeable barrels. Circa 1890



Mills Violano Virtuoso
As much of a favorite now as it was in 1912!
Plays violin and piano (usually Ragtime).

Pathe Coin Slot Horn Phonograph. Plays records from the centre.
Circa 1910

AMI a "Mother of Plastic" Juke Box. One of the largest Jukes ever made and one of the most colourful.
Circa 1946



Front view showing the organ and the pipe case behind it.

A Masterpiece! An Aeolian Pipe Organ Opus 1226

This magnificent instrument is a two-manual, 10-rank, residence organ built in 1913 for the Marquis of Camden of Bayham Abbey in Lamberhurst, Kent in southeast England.

It can play 58 note, 116 note and 176 note Duo Art rolls.



Pipe case, one of 2 in order to hold a total of about 900.

Tour

Enjoy a one hour guided demonstration tour of our mechanical musical instruments, encompassing Victorian musical boxes, player pianos, player reed and pipe organs.



If you like music or mechanics - you will love the Nickelodeon!



Watch and listen as a Belgian dance organ, 18th century domestic barrel organs, jukeboxes, phonographs, musical clocks and magic lanterns of yesteryear come to life in front of your eyes !

Phone (250) 837-5250